



## Who are Cleveland Mountain Rescue Team?

We are a team of volunteers; individuals who love the outdoors and want to help others.

Our Team was established in 1965 and we normally have around 45 to 50 Search and Rescue members who are on call 24-hours a day, every day of the year. We have no paid staff and our services are offered free to anyone who needs them. We are reliant on the generosity of local people and other organisations to cover the £42,000 average annual running costs of the Team.

In addition to Search and Rescue members we have up to 20 Support members who help with fundraising activities, act as injured or missing people, maintain the vehicles and equipment and who undertake a range of other jobs.

**The generous support of Jeremy and the Team at our local Sytner Mercedes-Benz of Teesside dealership, has made a hugely positive impact on our team.**

Their on-loan Mercedes GLB has performed flawlessly for us, exceeding our expectations and transporting our team members, dogs and kit safely whenever it has been called upon. We are grateful for their continued support.

The following pages highlight just how valuable the car continues to be!





In 2018 Mercedes-Benz of Teesside provided Cleveland Mountain Rescue Team with an on-loan Mercedes GLC 4x4. That car was a huge help to Team members, immediately transforming their capabilities - by transporting search dogs, supporting search & rescue operations and as a key resource to support fundraising activities.



During the first year of the COVID-19 pandemic the GLC was at the forefront of the Team's efforts to support local communities, for example it was used to deliver large quantities of PPE to council care services.



In June 2020 the Team took delivery of a replacement on-loan vehicle; this time a Mercedes GLB 4x4; a versatile and compact SUV ideally suited to the Team's needs.

Mark Weedy, the General Sales Manager, handed over the car to members Kath Pincott, Claire Starkey & Gary Clarke. Claire's trainee search dog 'Bracken' was on hand to give his approval.

The whole Team were delighted that Mercedes-Benz of Teesside continued to support their local mountain rescue team in such a generous way.

## September 2020

The GLB was soon deployed to support operations by transporting Team members and their equipment to search for a walker who had gone missing in a remote part of the Yorkshire Dales. Fortunately the elderly walker was found safe & well on the third day of the search. This was a large scale multi-agency search response involving a number of mountain rescue teams and attracting international media coverage.





May 2020

The vehicle was deployed as part of the Team's commitment to support local communities in need of assistance during the COVID-19 lockdown.

One Team member collected and later delivered various essential resources and some toys provided by very generous donors including a Morrisons store and Middlesbrough Football Club Foundation.

The gifts were donated to help and support vulnerable children who were in lockdown in the area and adversely affected due to then restrictions.

December 2020

In the run up to Christmas, the Team wanted to give something back to the communities that support them year in, year out by supporting the 'All Kids First' initiative.

Over the course of two-days, Team members gathered at Morrisons store in Darlington to help deliver 243 healthy food hampers to five schools. Using the Team's Incident Control van and the GLB, they made multiple delivery trips - there was a lot to fit in!

Long days for everyone involved with lots of miles covered. With it's carrying capacity and the ability to eat up the miles the GLB proved to be more than up to the job.



## March 2021

The Team has a water & flood rescue capability but that requires a significant amount of regular training. Two months after being deployed operationally at winter floods in North Yorkshire, the first water training session of the year saw the Team utilise the GLB to transport people and a large amount of equipment. It has also proved to be an ideal towing vehicle and is used to tow the Team's water and flood rescue trailer.



## May 2021

Redcar & Cleveland Borough Council gifted 56 iPads to their Care Homes, supplementing the national roll-out of tablets across the country. Team members were able to put the GLB to good use helping out with distribution of the iPads.



Later in May, Team members utilised the GLB to travel to a valuable Mental Health training course outside of their area.

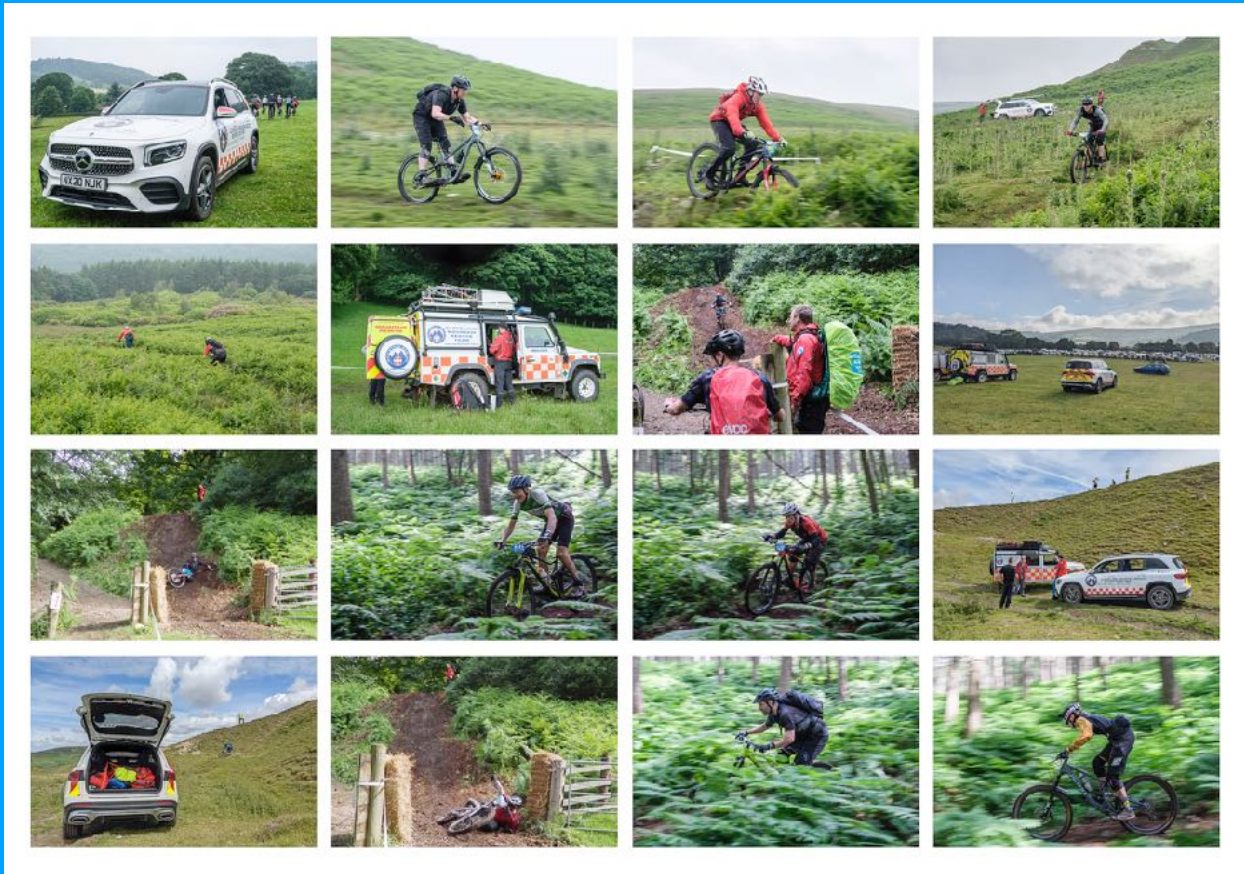


May 2021 was a busy month for the GLB as the country got going again after a long lockdown. It was used to transport members who assisted at the start of one of the many ultra-runs that take place across the North York Moors.

## July 2021

Team members provided cover for the Boltby Bash mountain bike event held over a weekend, using the GLB to transport people and medical equipment. Saturday was practice day, with the competition taking place on Sunday over five stages on the moorland tops and woodlands around Boltby, near Thirsk in North Yorkshire.

Despite some rain on the Saturday and a late afternoon deluge during a thunderstorm on the Sunday the GLB was more than up to the task in such conditions on the Moors.



## July 2021

A fundraising day at the National Trust Ormesby Hall.

The GLB makes light work of carrying the Team's personnel and gazebo together with a large quantity of display equipment and merchandise to and from such events.



September 2021

Five Team members attended a 'Water First Responder' course (learning how to work safely near and in water using land-based and wading techniques).

Following classroom work at their Base, the in-water training was held near Barnard Castle in County Durham using the GLB as transport for people and their equipment.

The successful candidates were then added to the Team's call-out list for water and flood rescues, further enhancing the Team's capability.



September 2021



Team members used the GLB to support the Cleveland Hike. This annual event involves competitors using a map and compass to find a series of checkpoints and then they hike to each one in turn. Points are awarded upon arrival - more if they are ahead of schedule. At each checkpoint there is an 'incident' - a challenge to tackle where they can win more points. 20-miles one day, 10-miles the following day!

The event included entrants from the Army, the Boys Brigade, families and veterans groups. The mountain rescue members help out by conducting kit checks before the start and generally support those involved if called upon during the weekend.



## October 2021

The GLB was used to collect a donation of drinking water kindly provided by Morrisons supermarket at Teesside park.

COVID-19 protocols require Team Members to wear PPE when treating and carrying casualties - the extra clothing required generates a lot of heat! Having water in Team vehicles to re-hydrate afterwards is essential and these type of donations are very appreciated by all Team Members.

The water is also available to casualties rescued by the Team if they are in need of refreshment.

Later in the year a similar collection was made at Tesco store in Coulby Newham.

In the lead up to Christmas 2021 the GLB was used in an initiative to support young children in the area. Team members, teachers, care workers and other organisers visited a local toy store to load trolleys with toys and gifts.



The GLB towed the Team's large trailer (containing 600 gifts) to their Base. After a marathon wrapping session it was used again, this time to deliver the gifts to 'Santa' who later gave them to many vulnerable children across the area.

Another pre-Christmas event was fundraising at a Tesco store in Coulby Newham. Having the GLB to transport Team personnel, the display and sales equipment is a huge help.



December 2021

Another busy month for the car, as Team members travelled to the Lake District for a 'Mountain Rescue Search Dogs England' course. These training weekends take place regularly in all weather conditions at locations across the country, attracting search dog handlers from all mountain rescue regions. As well as enabling Team members to attend these courses, they are an ideal showcase for the GLB's capabilities.



December 2021

For its final outing of 2021, the GLB was used to transport Team members and their merchandise to Northallerton for the Team's annual street



Over £1,700 was raised on the day - a record amount for this event.

**THANK YOU TO MERCEDES-BENZ OF TEESSIDE!**